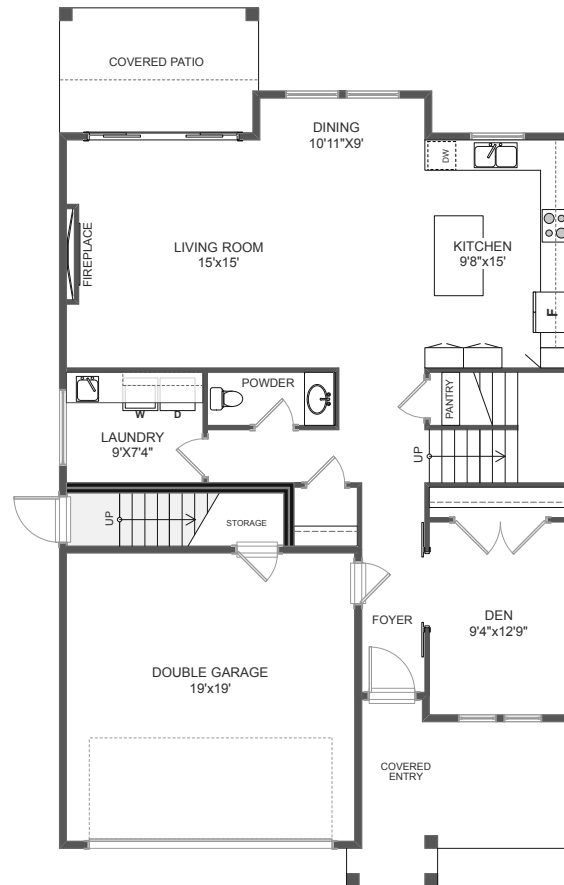


30 JEDBURGH PLACE

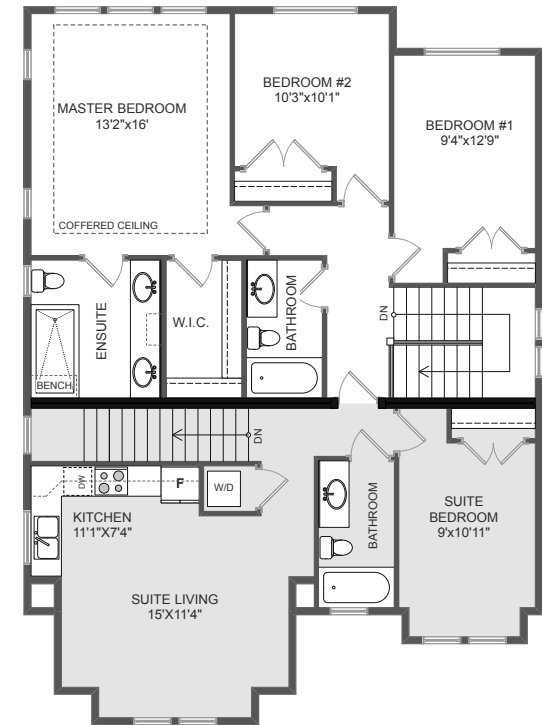


Located on a large, bright, and sunny lot in the popular Jedstone Place development, this four bedroom + den (or 5th bedroom) home includes a highly desirable legal suite that can just as easily be used as part of the primary home. The closer you look, the more that you will appreciate the designer touches including reclaimed wood details, custom wood barn doors, premium KitchenAid appliances, and an electric vehicle plug in the garage. Outside, the metal roof trim adds a designer touch, while the covered rear patio invites you to relax in your gorgeous, premium home.

Jedstone Place is a brand-new boutique development of eight custom designed homes encompassing the "farmhouse modern" theme. Each home has been carefully designed to include subtle accents that blend rustic and classic finishes together into a modern theme with respect for the past. Premium appliances, finishes, and designer selections make Jedstone Place a comfortable and rewarding choice to call home.



- Spacious, 4 bedrooms + den home
- Legal suite over the garage
- Premium appliance package included
- Fully sprinklered yard



Total Liveable Space: 2,519 sq.ft.

Main Floor: 1,058 sq.ft. | Garage: 461 sq.ft. | Upper Floor: 878 sq.ft. | Suite: 583 sq.ft.

www.JedstonePlace.com

The Preferred Homes Team, RE/MAX Camosun | 250-220-5061 or 1-800-663-2121

The house, its details and dimensions may vary from this plan and those plans demonstrated on the Web site. The seller reserves the right to make changes or modifications as required during the construction process.